



COLLABORATIVE
EXPERTISE.



COMPANY OVERVIEW.

MDM Consultancy is a global leader in architecture and consultancy, with a vast number of projects completed worldwide. This extensive portfolio showcases our commitment to quality, innovation, and client satisfaction.

MDM offers a comprehensive range of services, including architecture, interior design, landscaping, civil and structural engineering, project management, and building services engineering. This diverse expertise enables MDM to handle projects of all scales and complexities, ensuring meticulous planning and execution at every stage.

The company's excellence has been recognized with numerous prestigious awards. In 2020, MDM received the Quality & Excellence Award in Frankfurt, presented by BID Group One, acknowledging their outstanding commitment to quality standards. The following year, the Design Management Institute honored MDM with the Design Value Award 2021, celebrating their innovative and impactful design solutions.

In 2022, MDM was named Manager of the Year and Best Enterprise by the European Business Assembly, further solidifying their industry leadership. Most recently, the company received the Global Architecture & Design Awards 2023 from Rethinking the Future, honoring their cutting-edge and sustainable architectural designs. Additionally, MDM's commitment to safety was recognized by the United States Army Corps of Engineers with a Safety Award, underscoring their dedication to maintaining the highest safety standards in all their projects.

MDM Architectural Consultancy LLC consistently pushes the boundaries of design and engineering, delivering exceptional results and setting new benchmarks for industry excellence.

OUR SERVICES

Planning

Meticulous planning services to ensure every project is strategically designed and executed with precision.

Concept/Detailed Design

Innovative designing that sets the foundation for exceptional architectural creations, tailored to your vision.

Interior Design

Transformative interior design solutions that blend aesthetics with functionality, creating inspiring spaces.



Restoration

Transformative interior design solutions that blend aesthetics with functionality, creating inspiring spaces.

Construction

Comprehensive construction services that bring architectural visions to life with unparalleled craftsmanship.

Project Management Consultancy

Professional consultation to guide you through every stage of your project, ensuring seamless integration and success.

THE MDM ADVANTAGE

Choosing MDM means partnering with a trusted leader in architectural innovation and project excellence. Here's why we stand out:

Proven Track Record: MDM's global experience across diverse sectors ensures success. Our award-winning projects and decades of expertise guarantee precision in planning and execution.

Tailored Solutions: From concept to completion, we offer custom, client-focused solutions, ensuring every project meets unique needs.

Sustainability & Innovation: We integrate cutting-edge, sustainable design practices, setting new standards in architecture and construction.

Unmatched Quality: Recognized for excellence by the U.S. Army Corps of Engineers and international bodies, our commitment to craftsmanship and safety is unparalleled.

Global Expertise: With projects spanning continents, we have the knowledge and network to deliver exceptional results, regardless of scale.



CLIENTS



United Nations
Office For Project
Services (UNOPS)



United States Army
Corps of Engineers
(USACE)



British American
Tobacco, Bangladesh



Department For
International
Development (UK)



International Federation
Of Red Cross



Australian High Commission

Australian High
Commission



British
High Commission

British High
Commission



Canadian High
Commission &
Recreation Club



Hotel Sheraton Winter
Garden, Dhaka



HSBC Bank



International Hostipal
Group (IHG), UK



British Business
Group (BBG)
British Council



Medicines Sans
Frontieres



Prime Finance
Bangladesh LTD



Under Priviledged Children
Education Program
(UCEP), Dhaka, Bangladesh



Grace School
Dhaka, Bangladesh



Bangladesh Navy Nou Kollan
Foundation Trading Company
LTD. (NKFTCL)



American International
School (AIS), Dhaka,
Bangladesh

GLOBAL LOCATIONS



London

78 Nightingale Lane Wanstead,
London, UK

Rome

Via delle Sette Chiese, 142,
00145 Roma RM, Italy

U.S.A.

101 Southwestern Blvd
Sugar Land,
TX 77478-3668
USA

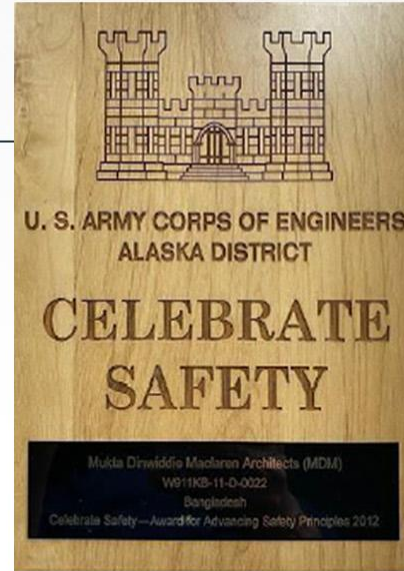
Abu Dhabi

Etihad Towers
Tower 3, Level 36,
Corniche, Abu Dhabi City, UAE,
P.O. Box 28686

Dhaka

Nasrin Casabella (Level-12) 2A,
Gulshan North Avenue, Gulshan #2,
Dhaka 1212, Bangladesh

AWARDS AND CERTIFICATIONS



MDM Architects - Mukta Dinwiddie McLaren Architects

received
The BID Quality and Excellence Award
in the Gold Category

It is an honor to recognize MDM Architects - Mukta Dinwiddie McLaren Architects of Bangladesh for its Commitment to Quality, Leadership, Technology and Innovation in the continuous search for Excellence. The International Arch of Europe Convention, taking place at the InterContinental Convention Center, by Mr. Jose E. Prieto, President of BID and received by Mr. Ahmed Mukta, Principal symbolizes international recognition of leadership in Quality of MDM Architects - Mukta Dinwiddie McLaren Architects, for following the path to continuous quality improvement.



MEET THE TEAM



Ahmed Mukta
Managing Director



Sachin Sharma
Director



Paolo Rossi
Head of Design
(Consultant)



Saeed Al Shamsi
MENA Regional Partner



Suresh Pathirana
Chief Operations Officer

A GLIMPSE INTO

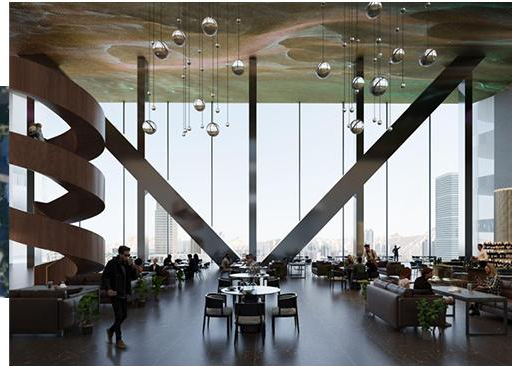
OUR PROJECTS

(Work in Progress)

ABUNDANCE TOWER RIYADH, SAUDI ARABIA

A towering marvel reaching 2 kilometers, this design study symbolizes architectural innovation and ambition. It seamlessly integrates cutting-edge technology, sustainable practices, and sleek aesthetics, drawing inspiration from nature's geometries such as Fibonacci spirals and honeycomb hexagons.

Serving as an urban heart, it fosters city generation and promotes sustainable living, with thoughtful considerations for greenery, lighting, and solar energy extending sustainability throughout the building.



Role in Project :
Design Consultant



Project Cost:
US\$ 27 Billion (Approx.)

(Work in Progress)

RIYADH BUSINESS PARK RIYADH, SAUDI ARABIA

Role in Project :
Design Consultant
in association with LWK

Consisting of six office buildings, multiple retail centers, a serviced condominiums building and public realm urban amenities & lounges, Riyadh Lifestyle Business Park aims to be the best lifestyle business park in Riyadh.

An atmosphere in which to do business on a grand scale, delight oneself with the modern entertainment centers all within a setting of lush panoramic views, relaxed under elegant touches of nature.



Project Cost:
US\$ 435 Million (Approx.)

VILLAS IN DUBAI, UAE

Role in Project :
Sub-Consultancy
with Lacasa



Project Cost : US\$ 10 Million (Approx.) for 100 Villas

DESAR VILLAS, SAUDI ARABIA

Role in Project :
Design Consultant

The landscape in this design played an important role by creating a buffer between the main villa and the guest visiting area, also known as 'Majlish'.

The entire design serves the building with different ranges of zoning such as- open spaces, semi-private spaces and complete privacy, in areas it is needed.

Project Cost : US\$ 12 Million (Approx.)

Role in Project : Design Consultant

Number of Villas : 250 nos.

Phase of work : Conceptual Design



JOINERS MEWS, LONDON

Role in Project :
Design & Built Contract

Joiners Mews in London boasts a meticulously crafted interior with high-quality finishes and a predominantly white color scheme. This elegant space seamlessly blends modern sophistication with timeless charm. The white walls and smooth surfaces exude purity and serenity, allowing natural light to beautifully illuminate the rooms.

The carefully selected furnishings and bespoke fixtures elevate the overall aesthetic, adding a touch of opulence and refinement. Joiners Mews offers a haven of tranquility, seamlessly blending luxury with understated elegance.



BHASAN CHAR, BANGLADESH

Role in Project :
Design & Built

In 2017, nearly 1 million Myanmar nationals fled to Bangladesh following the brutal atrocities they faced at the hands of the Myanmar military. The Honorable Prime Minister Sheikh Hasina stood by the oppressed and assured them of a temporary living space until their return to Myanmar. The island of Bhasan Char was chosen to be developed and provide a safe and transient accommodation for the Forcibly Displaced Myanmar Nationals (FDMNs).

MDM Architects was appointed as the onshore consultant, responsible for all infrastructure works, including architectural, structural, civil, electrical, and plumbing design, as well as the supervision.



BN COMMERCIAL COMPLEX, DHAKA

Role in Project :
Design Consultant



MDM was appointed as a Design and Project Management Consultant In association with Ove Arup Partners as a sub consultant.

Location: The Naval Base and close to Bashundhara International Convention City beside 300 feet express highway, Dhaka, Bangladesh

Project Cost:
US\$ 100 Million (Approx.)

AMERICAN INTERNATIONAL SCHOOL, DHAKA

Role in Project :
Design & Built

Originally a two-story building, the school underwent significant expansion with the addition of the 3rd and 4th levels designed by MDM. The project was completed in stages: first, the extension and renovation of the music room and auditorium were completed. In the second stage, the elementary and middle schools were extended, and the management offices were relocated. The third stage saw the extension of the high school and the completion of the art room.

In the fourth stage, the middle school was expanded to include the 3rd and 4th levels, featuring two MS laboratories, four general laboratories, two classrooms, office space, storerooms, and restrooms. These new levels also boast sports facilities, including a tennis court, two squash courts, a gymnasium, and other amenities.



Project Cost:
US\$ 2.4 Million (Approx.)

TRIBHUVAN UNIVERSITY TEACHING HOSPITAL (TUTH) BLOOD CENTER

Role in Project:
Design &
Build Contract

Project Cost :
US\$ 1.2 Million (Approx.)
funded by USACE

Location :
Kathmandu, Nepal



US Army Corps & Engineer executed the project and awarded MDM the job as design and build contractor. The building was designed to withstand earthquake upto 8.4 Richter scale. Nepal's extreme environmental condition was an opportunity to provide a sustainable design. Green Building principles were adopted in all stages & the design. Interaction with local authorities and compliances with the local regulation was a potential challenge.

This is the first blood centre three storied building with all in-house processing facilities in Nepal. The outer look of the building was designed like typical Nepalese houses to provide a homely experience.



CONTACT US.



+971 525 202 512
+971 529 134 479



mdm@bol-online.com



mdmarchitects.co.uk



Etihad Towers
Tower 3, Level 36,
Corniche, Abu Dhabi City, UAE
P.O. Box 28686

